



# Understanding the CCC Missions Journey and Structure

## THE FOUNDATION: A LEGACY OF LEADERSHIP

Jesus said to his disciples in John 4:38: ***"I sent you to reap what you have not worked for. Others have done the hard work, and you have reaped the benefits of their labor."***

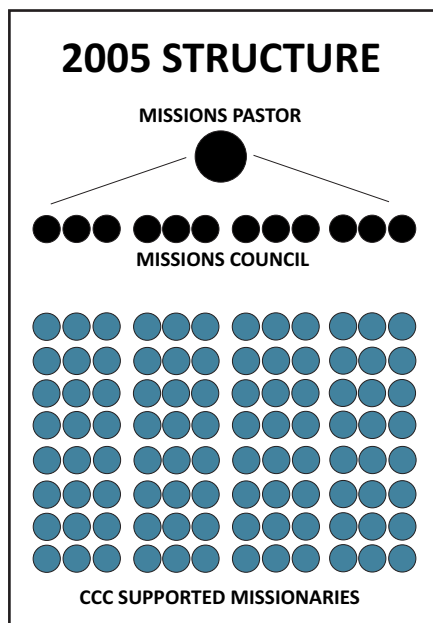
When it comes to the success of our missions program at CCC, this statement certainly does apply. We are seeing today the harvest of many years of prayer and labor.

### 1. A Long-term Senior Pastor

Standing on the shoulders of those who labored in the early years, Pastor Joel and Donna came to Midland in the summer of 1986. They instituted Faith Promises in 1988 and began weaving a strong commitment to global missions into the DNA of our church. That first year the congregation's Faith Promises were \$66,000! Now, (2013) Faith Promises have grown by more than 500% to \$400,000! But beyond the dollars, a true HEART for the global LOST has been nurtured in the people and ministries of CCC.

### 2. Prior Missions Pastors

Additionally, through the vision of the Senior Pastor, a number of Missions Pastors have served to build and strengthen the missions vision at CCC. Each Pastor who had been given the assignment of overseeing missions, have sacrificially and uniquely invested a part of themselves to see the heartbeat of Mission continue to grow and develop in our church. This is the wonderful foundation that Kristine and I have been blessed to build upon since coming to Midland.



## MISSIONS COUNCIL

In 2005, when our service to missions began here at CCC, we had a very strong and deeply committed **Missions Council of 12-14** people. They assisted the Missions Pastor in running the Missions Program. With about 100 missionaries being supported at the time, It didn't take long to determine we couldn't read and digest all of the newsletters that were coming daily across my desk and email (though I wanted to and attempted to!) --Not to mention the many other missionaries that were asking CCC to consider adding them to regular support. **I realized these missionaries deserved much more prayerful attention, encouragement and consideration than I, or Kristine AND I could give them.**

At the same time, the Missions Council was expressing their desire to be more involved and more intimately connected to our missionaries. As we began to seek the Lord's direction, **we were led to model of Assemblies of God World Missions.**



## MISSIONS COUNCIL TO REGIONAL DIRECTORS

Assemblies of God Missions is organized by region. Each region is **loosely** defined by **continent**, but **specifically** defined by **cultural connectedness**. For example, the Northern rim of the continent of Africa fits the Eurasian culture better than it does in sub-Saharan Africa. The regions listed to the Left are: ***Africa, Asia Pacific and Northern Asia, Eurasia, Europe, Latin America and the Caribbean, Specialized/International Ministries*** (Including those missions and ministries that are global in nature VS. limited to one particular region.) and ***The U.S.*** (AG Home Missions – CCC includes local ministries)

The missionaries and ministries in each region, are directed by a **“Regional Director”** each serving on the Executive Leadership Committee at our Headquarters in Springfield, Missouri.

## Assemblies of God and CCC REGIONS and DIRECTORS

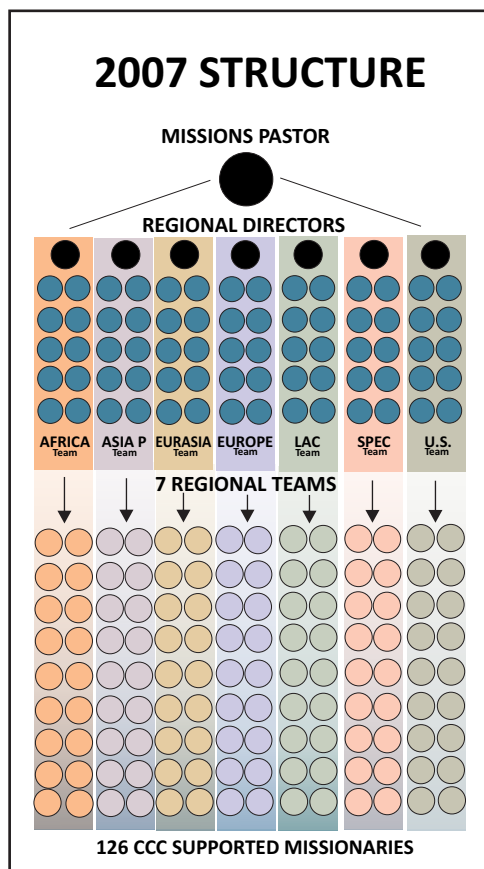
 Assemblies of God World Missions	AG DIRECTORS							
	AFRICA	EUROPE	LATIN America	EURASIA	ASIA Pacific	NORTHERN Asia	INTERNATIONAL Specialized	U.S. & LOCAL
	 Greg BEGGS	 Paul TREMENTOZZI	 David ELLIS	 Omar BEILER	 Russ TURNEY	 Bob MADDUX	 JoAnn BUTRIN	 Zollie SMITH
 Christian CELEBRATION center MISSIONS	CCC DIRECTORS							
	 Mike & Corrine GOLD	 Matt & Nancy PLACE	 Matt & Dawn CLAREY	 Bruce & Robin MALONE	 Andy & Linda QUIGLEY	 Scott & Meggy WHEELDON	 David & Susan JOHNSON	 Marty & Margo WAZBINSKI

Our **FIRST STEP**, was to transition each Missions Council Member into a **REGIONAL DIRECTOR** on the level of our local church, and assign to them the oversight of all of CCC's missions interests pertaining to their region. This would include:

1. Oversight, prayer and care for our currently supported missionaries in their region.
2. Assessment of God's activity, past and present, with a view to forwarding the Kingdom and maturing the faith in their area.
3. Based upon this assessment, Development of the future strategy of CCC's touch unique to their area.
4. Consideration of potential new missionaries as we can expand.
5. Hosting guest missionaries from their region when visiting.

Almost simultaneous to the first step, we realized the need for a **SECOND**. It was just as difficult for these Regional Directors to adequately monitor, pray, care for, and communicate with their 20-25 missionaries as it was for Kristine and I to do so with ALL the missionaries. **We needed TEAMS**. The thought of engaging more people in the work of missions and building meaningful relationships with our missionaries was very exciting!





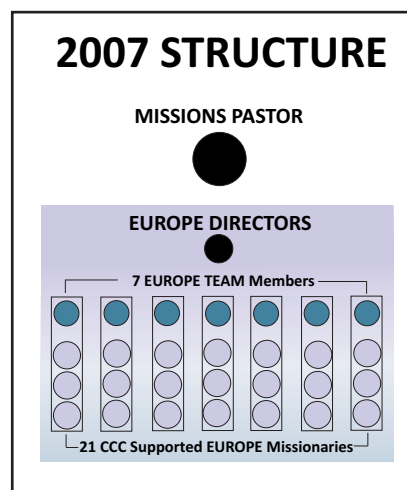
\* The 2007 structure diagram to the left illustrates the fact that CCC's structure began with Northern Asia still combined with our Asia Pacific region. It was not until 2014 that we make it its own structure and team.

***"If we had 30 more people,  
WHAT COULD WE DO that  
we can't do now?"***



## REGIONAL TEAMS & MISSIONARY REPS

We began to recruit a team of people to work with each CCC Regional Director. We would establish an Africa TEAM, a Eurasia TEAM, a Europe TEAM, a U.S. TEAM, etc. now 8 teams altogether.\* (See the 2007 Structure diagram to the Left) Team members would then become "Missionary Reps" and be assigned a portfolio with 2-6 missionary families. (See EUROPE diagrams below) These would become "their missionaries" and each Missionary Rep would request to be added to each of their missionary's newsletter/communication list so they could **stay connected** with the victories and challenges of their ministry. They would **pray** for them regularly and **encourage** them when appropriate. Team members look for ways they could **bless** their missionaries by contributing to projects and helping meet their financial needs through regional budget moneys allocated annually to each region for this purpose.



The goal is to build relevant **RELATIONSHIPS** between the CCC Team Member and the missionary family as they interact over time.

Over the next few years, we grew to from 12-14 on the original Missions Council to over 70 CCCrs on 7 Regional Teams!

## AN UNFORGETTABLE JOURNEY

Though surprised and very grateful for the growth, we felt that the next step was to grow to have 10% of the church involved. This means we would need to see about 100 people on our teams. A growth of an additional 30 people. I remember a conversation during a missions council meeting, when we realized the question we had been asking ourselves: ***"What are we going to do with 30 more people?"*** was actually the WRONG QUESTION. What we SHOULD have been asking was: ***"If we had 30 more people, WHAT COULD WE DO that we can't do now?"***

It was about that time, in January of 2010, Kristine and I were on a plane headed to **Atlanta, Georgia** to attend the Assemblies of God World Missions Forum --a meeting of pastors and other missions leaders in our fellowship. With my eyes closed, 20-30 thousand feet in the air, I was drifting between thinking, resting and praying, when I had a **"epiphany"** of sorts. One of only about 3 in my entire Christian life. I knew that I was in the presence of the Lord and that He intended to speak something very important to me about what we, as a missions leadership team, had been seeking Him about.



***"You have allowed the SCOPE of your missions program to be DEFINED by the parameters of your FINANCIAL RESOURCES."***

**Matthew 28:19** (NIV)

Therefore go and make disciples of **ALL nations**, baptizing them in the name of the Father and of the Son and of the Holy Spirit.

**Mark 16:15** (NIV)

He said to them, "Go into **ALL the world** and preach the good news to all creation.

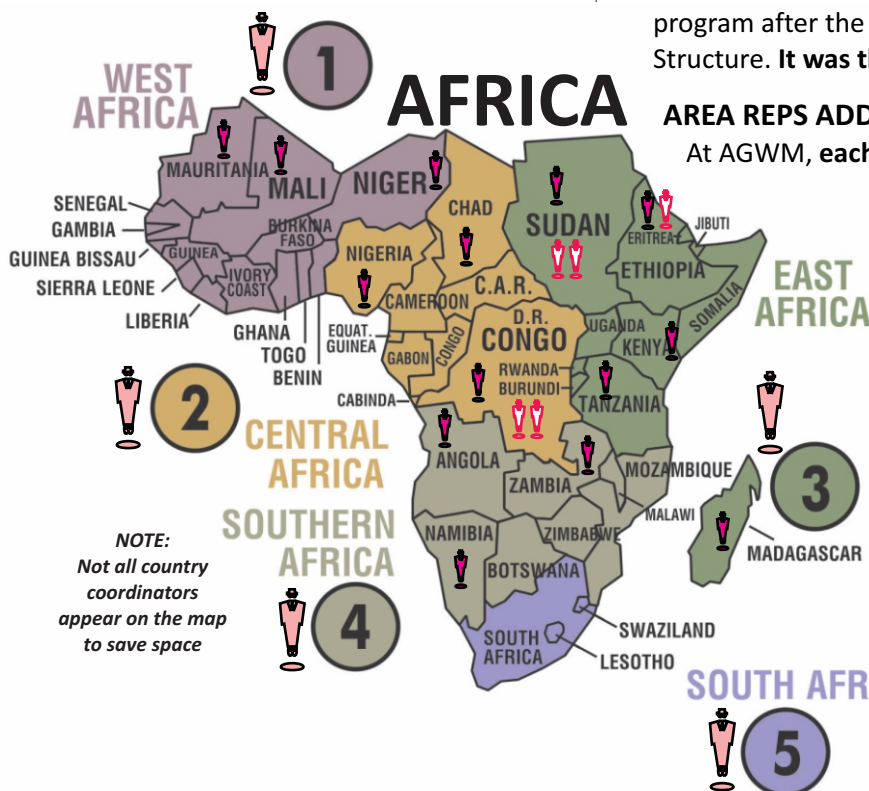
***"You have UNDERUTILIZED the UNLIMITED RESOURCE of INTERCESSORY PRAYER."***

I didn't feel particularly or unusually "spiritual" but just knew I was hearing the message God was wanting to communicate to us. He said: ***"You have allowed the SCOPE of your missions program to be DEFINED by the parameters of your FINANCIAL RESOURCES."*** Instantly I remembered that HE had defined the scope of what our missions program should be when, in **Luke 24:47** he said: ***"Go into ALL the world to preach the good news."*** (**Matthew 28:19, and Mark 16:15**)

**Then it hit me.** If we could "afford" to support a missionary in a particular country, we did a pretty good job praying and caring for that missionary. The country they were currently working in was even on our radar to some extent... BUT... if we couldn't AFFORD to support a missionary in a particular country or area, **that country was NOT a part of our focus AT ALL.**

As I was realizing that we indeed HAD limited CCCs "touch" to only those few countries in which we could afford to support a work financially, the Holy Spirit brought a SECOND STATEMENT. ***"You have UNDERUTILIZED the UNLIMITED RESOURCE of INTERCESSORY PRAYER."*** Wow. True again. Then I put it together and realized that however God would choose to allow us to be a blessing financially to the world of missions, that would be great! – **but through intentional, strategic prayer, CCC could make a significant IMPACT in EVERY nation of the world!**

Since I am wired to be a "structure" or "systems" guy, I told God that I "got it" but asked Him to please give me a structure that would facilitate obedience at this level. He said that He **already had** and reminded me about how we had patterned our missions program after the Assemblies of God World Missions REGIONAL Structure. **It was then that I realized the NEXT STEP.**



#### AREA REPS ADDED TO THE REGIONAL TEAMS

At AGWM, each region is subdivided culturally into 3-5 "AREAS".

**EACH AREA contains a group of countries that are culturally connected** (*See the 5 areas of the AFRICA Region left.*) The AG has personnel in a few, some or all of these countries. An AG missionary that is given administrative oversight of all AG missionary personnel in a COUNTRY is called a **"COUNTRY COORDINATOR."** (or "Field Moderator")

An AG missionary that is given oversight of all the COUNTRY COORDINATORS in an AREA is called an **AREA DIRECTOR.** (*See Left*)

These **AREA DIRECTORS** give oversight, encouragement and assistance when appropriate to see the work of the Kingdom advance in their particular area of oversight. **These ADs know the hindering barriers that need to fall and the strategic shifts that need to happen to see the Kingdom advance in their areas!**

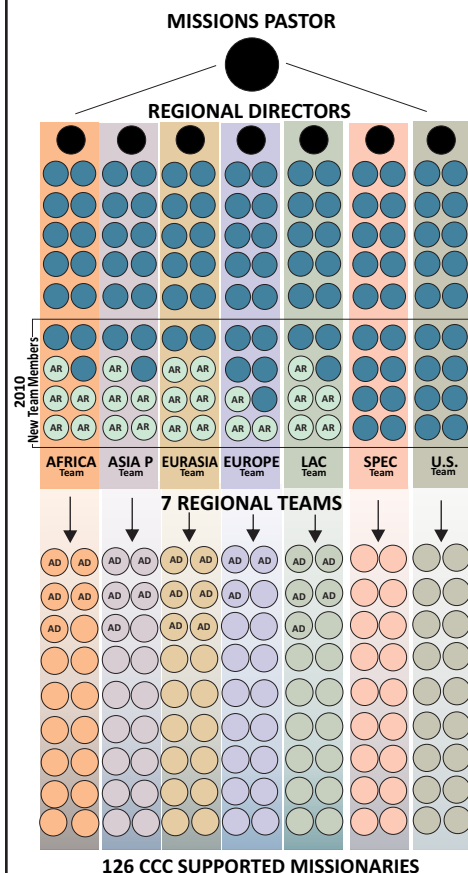
**Matthew 28:19** (NIV)

Therefore go and make disciples of **ALL nations**, baptizing them in the name of the Father and of the Son and of the Holy Spirit.

***"You have UNDERUTILIZED the UNLIMITED RESOURCE of INTERCESSORY PRAYER."***



## 2010 STRUCTURE



### AREA REPS:

1. IMPACT THROUGH INFORMED INTERCESSION
2. FACILITATE STRATEGIC INVESTMENTS OF FUNDS
3. SCOUT OUT POTENTIAL NEW MISSIONARIES

### BACK TO THE CONVERSATION ON THE PLANE

Now bring your mind back to the Holy Spirit's conversation with me on the plane. **He was making THREE POINTS.** CCC had allowed finances to **LIMIT** the scope of our touch – God wanted CCC's missions program to **BLESS EVERY** nation (not just where we could afford a missionary.) **SECONDLY**, in order to accomplish that, we needed to somehow **leverage the UNLIMITED RESOURCE OF STRATEGIC INTERCESSION!** **THIRDLY**, the answer to **HOW** we were to accomplish this was to be found in the organizational structure of Assemblies of God World Missions!

There are about 28 individual AREAS globally.

If we could recruit and train **28 additional team** members at CCC, we could "partner" a CCC missions team member with EVERY AG AREA DIRECTOR in the world! Then in a similar way that our **current** team members are assigned a **missionary** to communicate with and pray for, as these **28 CCC AREA "REPs"** communicated with, and prayed regularly for, the **28 AG AREA DIRECTORS**, our reps would become aware of the unique history, needs, and strategies of each of the countries within "their area". We could then be able to engage in a way that would make a **strategic IMPACT** in EACH of these countries, and in the AREA as a whole by means of informed intercession whether we could "afford" to support a missionary in each of these countries or NOT!

And, for the **FIRST TIME**, the **SCOPE** of CCC's touch would be **INTENTIONAL, STRATEGIC... AND GLOBAL!**

I shared the vision with the congregation in May of 2010 and asked for 28 people to consider. There were about 70 who responded! We took the summer months for training and began folding these new team members into our existing regional teams. By fall, we had settled into a total of about **120 participants**. We were witnessing something miraculous! In 5 years we've seen lay involvement in missions grow from the original Missions Council of 12-14 to over 120 people serving on multiple Regional Teams! – a 900% increase in lay involvement! We had exceeded our goal of having 10% of the church involved! (*See 2010 Structure Left*)

### HOW OUR CCC AREA REPS FACILITATE STRATEGIC TOUCHES

Currently, as Regional Teams meet, there are **THREE** ways our Area Reps can facilitate a strategic touch. **FIRST** as mentioned above, through **INFORMED INTERCESSION** for the AG Area Director, AG Country Coordinators, missionaries and their work. As they plan and carry out ministry in the trenches of the front lines of the Kingdom, CCC, through the ministry of our Area Reps and Regional Teams can be partnering with them in prayer, **IMPACTING** the outcome!

**SECONDLY**, as our Area Reps **uncover strategic projects and ministries** that are happening – especially in countries we currently are not supporting a missionary, CCC Area Reps can bring these opportunities to the team and can **ACCESS STRATEGIC FUNDS** set aside for this specific purpose. Again this provides CCC with **rare Kingdom investment opportunities to BE A BLESSING** to people that otherwise we would not even be aware of!



The **THIRD** way Area Reps can facilitate CCC's strategic touch, is by becoming aware of the work of quality missionaries serving in areas CCC does not yet support anyone. In this way Area Reps serve like "**scouts**" surfacing to their Regional Team **POTENTIAL NEW MISSIONARIES** for the team's future consideration. In this way the CCC Area Rep, along with His or Her team actually serve to shape the future touch CCC will have in **EACH** particular region! **THAT IS A POWERFUL THOUGHT INDEED!**

## GLOBAL PRAYER INITIATIVES:

### PRAYER FOR EVERY COUNTRY AND ALL PEOPLE GROUPS

God had clearly called us to touch **EVERY NATION** in prayer, so also in the fall of 2010, we began having our monthly Global Prayer Initiatives (GPIs). These happen on the Monday night following most weekends in which we have a guest missionary speaking in our Sunday services. At the GPIs, we bring together **ALL** the missions regional teams, along with others in the congregation who want to pray for missions and gather for an hour and fifteen minutes of worship and focused intercession for our **missionaries, unreached people groups** and the **all the nations** of the world.

**2 weeks in advance of each GPI, CCC Missionary and AREA Reps alert their missionaries of our upcoming prayer meeting and invite them to send critical prayer requests.** These are collected by the team members, along with any other needs the team members have become aware of by reading missionary emails and newsletters, and sent to their CCC Regional Director **10 days** in advance of our GPI. Regional Directors then compile a full "team list" and submit them to the office **1 week** in advance for printing. These lists are then made available to the entire team as they arrive at the GPI. In this way, the **entire** regional team can be aware of **ALL** the needs in their area and pray as the Spirit directs.

We pray, using between **90-100 flags** of countries we support missionaries in and many other different kinds of **scripture and prayer tools**. Participants can walk out onto **eight 12' x 15' vinyl prayer maps** spread out on the floor of each of the regions of the world, or pray at the "**wall of the Unreached**" – 27 veteran's memorial style banners stretching over 65' floor to ceiling and listing over 2,700 unreached people groups all over the world.

Our prayer meeting concludes with special prayer for our missionary guest and **presenting a check** reflecting the congregation's giving the day before. **Following the prayer meeting, the Regional Teams all gather in different rooms** to meet with missionaries and accomplish their regional business for that month. (*More info about GPIs and principles of prayer are available*)

Since 2010, there have been well over **4,000 hours** collectively invested into strategic intercessory prayer for our missionaries and the nations of the world. There is no doubt, these meetings have become a centerpiece and foundation stone of CCC's missions program. This has been affirmed by almost **ALL**, of the more than **100 guest missionaries and Pastors** that CCC has had the privilege of hosting since we began the GPIs in the fall of 2010.